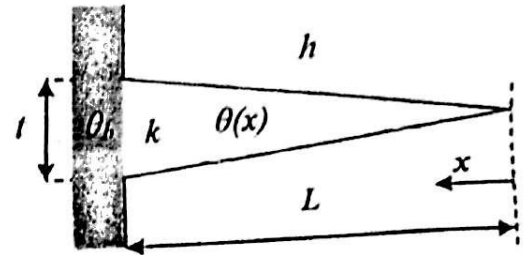


Indian Institute of Technology, Kharagpur
Mechanical Engineering Department

Heat Transfer (ME 30005) – Autumn Semester 2016
 Mid-Semester Exam

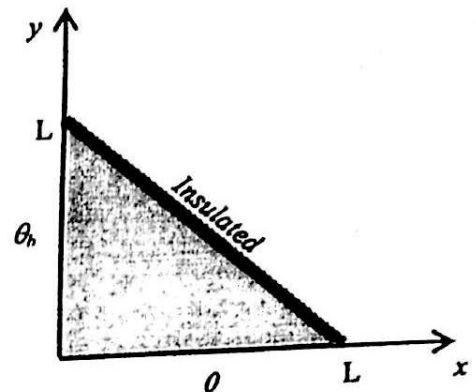
1. Consider longitudinal conduction through a fin with triangular profile. The width of the fin is W (not shown). Show that the temperature distribution along the fin, $\theta(x)$, must satisfy the differential equation

$$x \frac{d^2\theta}{dx^2} + \frac{d\theta}{dx} - a\theta = 0$$



Determine the expression for a . Outline a method to solve this equation (you do NOT have to solve it). 5

2. The figure shows the triangular cross-section of a long bar with a temperature difference of θ_b maintained between two sides that are perpendicular to each other. The hypotenuse is perfectly insulated. Outline a method for analytical solution of the temperature field along with governing equations and boundary conditions. You do NOT need to get the solution. 5



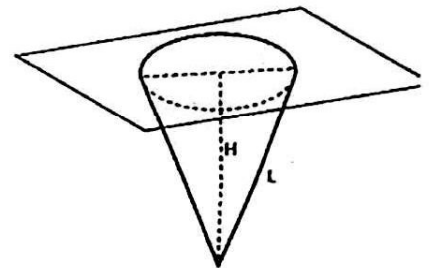
3. A person is found dead at 5 pm in a room at 20°C. The temperature of the body is measured to be 25°C and h is estimated to be 4 W/m²-K. Estimate the time of the person's death by modeling the corpse as a 20-cm diameter and 1.7-m long (significantly larger compared to lateral dimension) cylinder with $k = 0.8$ W/m-K. Assume a healthy body temperature to be 37°C. 9

$$\alpha = 5 \times 10^{-7} \text{ m}^2/\text{s}$$

4. Temperature of sun's surface is 5779 K and it may be assumed to be black. Calculate
- the maximum value of monochromatic emissive power $e_{b\lambda}$ (max) in the radiation emitted from the surface of the sun and the wavelength λ_m corresponding to it
 - emissive power of the sun's surface
 - e_b and $e_{b\lambda}$ at λ_m as received at the earth's surface

The mean distance between the sun and earth can be assumed to be 1.5×10^8 km and radius of the sun is 6.95×10^5 km. 2+1+2 = 5

5. (a) Assume a diffuse grey surface at 800K with emissivity of 0.8. Calculate its radiation intensity in the normal direction (i_n) and the radiant flux emitted within a cone with zenith angle of 50°.



- (b) Calculate the shape factor for the inner surface of a conical cavity with respect to itself. 5+5 = 10

Useful data

Stefan Boltzmann constant:
 Coefficient of Wien's law:

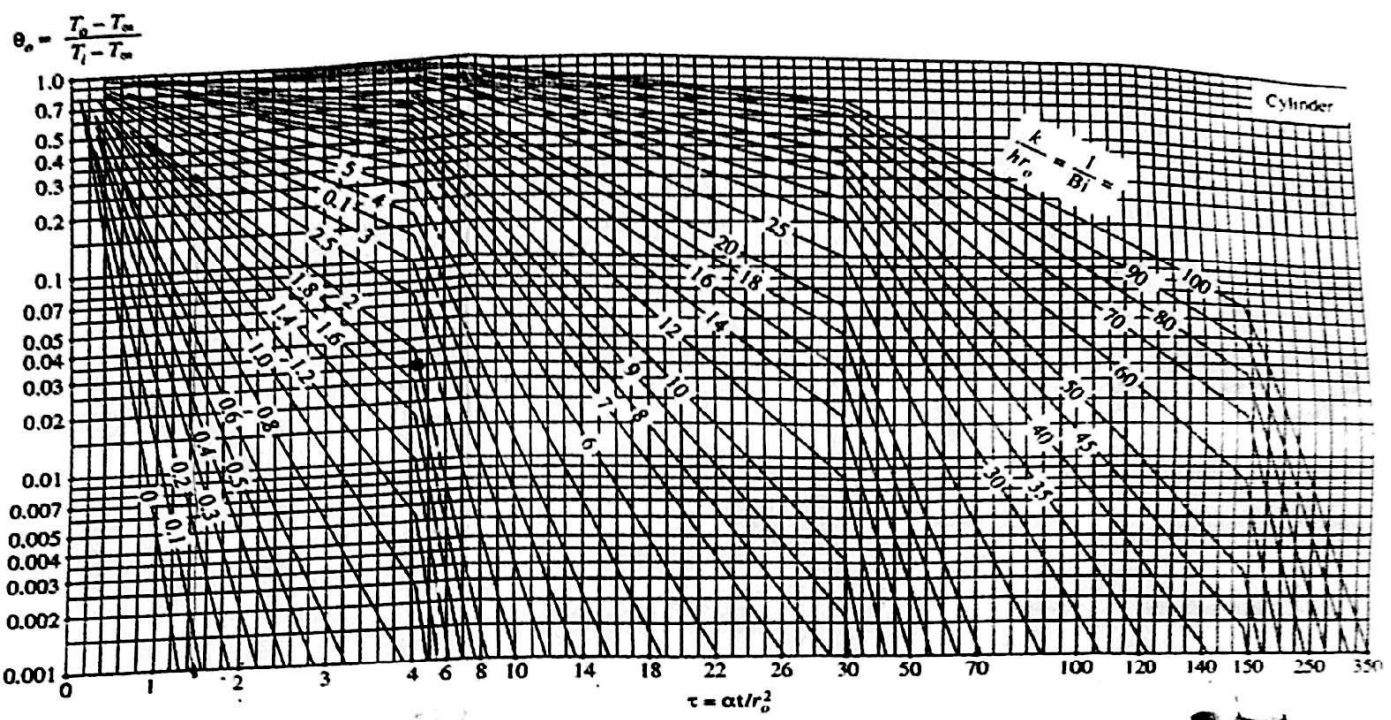
$$5.667 \times 10^{-8} \text{ W/m}^2\text{-K}^4$$

$$0.00290 \text{ m-K}$$

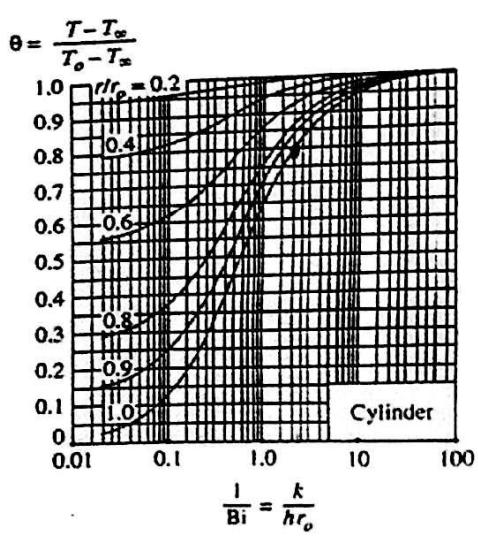
Planck's Law:

$$e_{b\lambda} = \frac{2\pi C_1}{\lambda^5 \left[e^{C_2/\lambda T} - 1 \right]}$$

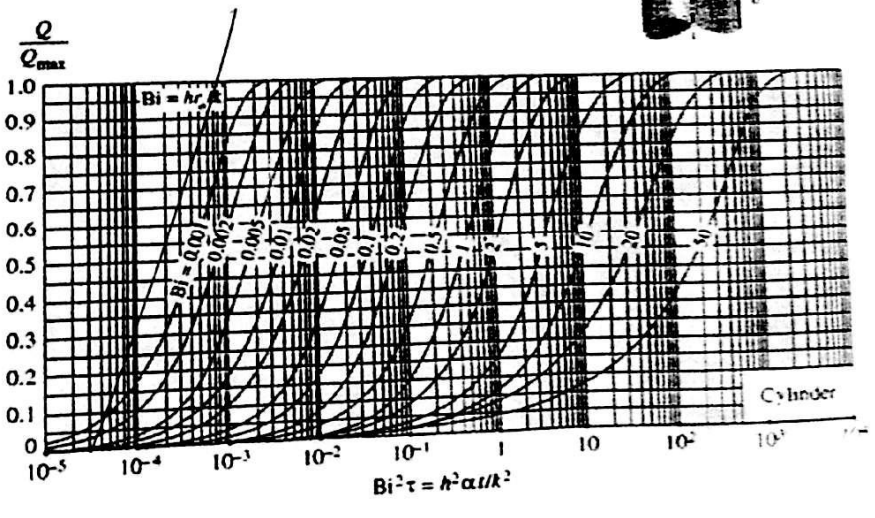
$$C_1 = 5.96 \times 10^{-17} \text{ W-m}^2, C_2 = 0.014387 \text{ m-K}$$



(a) Centerline temperature (from M. P. Heisler)



(b) Temperature distribution (from M. P. Heisler)



(c) Heat transfer (from H. Gröber et al.)